

HEALTH SCRUTINY PANEL - TUESDAY, 8TH SEPTEMBER, 2020

SUPPLEMENTARY PAPERS

The following presentation was tabled at the meeting:

<u>AGENDA ITEM</u>	<u>REPORT TITLE</u>	<u>PAGE</u>	<u>WARD</u>
6.	Situation Report - Verbal Update on COVID-19 in Slough	1 - 8	All

This page is intentionally left blank

Situation Report

Update on COVID-19 in Slough

COVID-19 Cases & Deaths

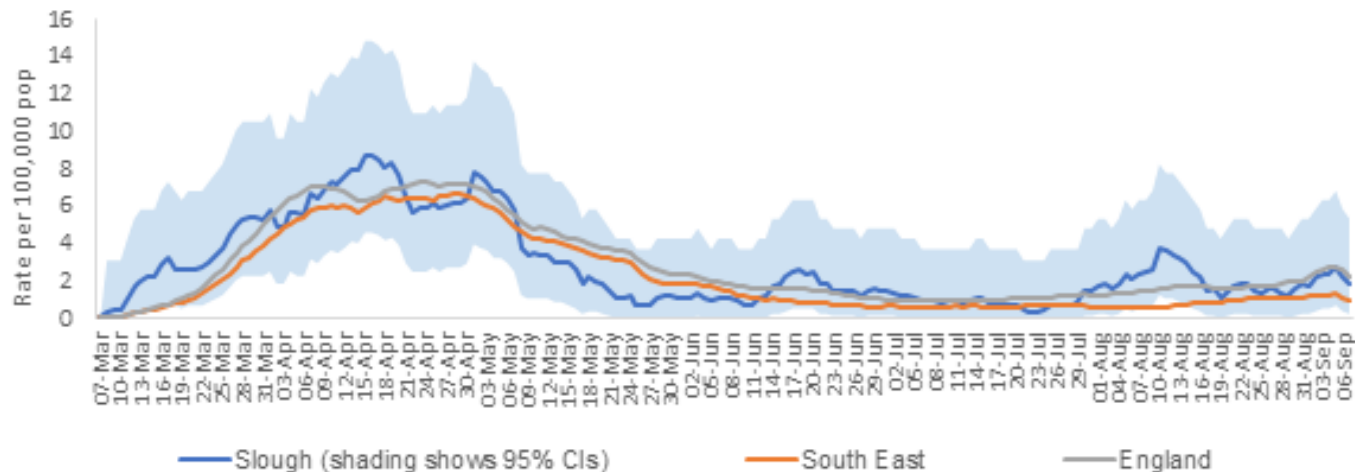
Confirmed cases for residents of Slough (Pillar 1 and 2)

Please note: PHE advise that data for the most recent five days should always be considered as incomplete and will be retrospectively updated as new cases are confirmed.

	Date specimen taken			Total cases (cumulative)
	24-Aug-20	31-Aug-20	07-Sep-20	
Number of cases (7 day rolling average)	2.3	2.9	2.9	790
Rate per 100,000 population	1.5	1.9	1.9	529.8

Comparison of 7-day rolling average at 07-Sep-20	Similar to South East	Similar to England
Comparison of cumulative rates at 07-Sep-20	Significantly higher than South East East	Similar to England

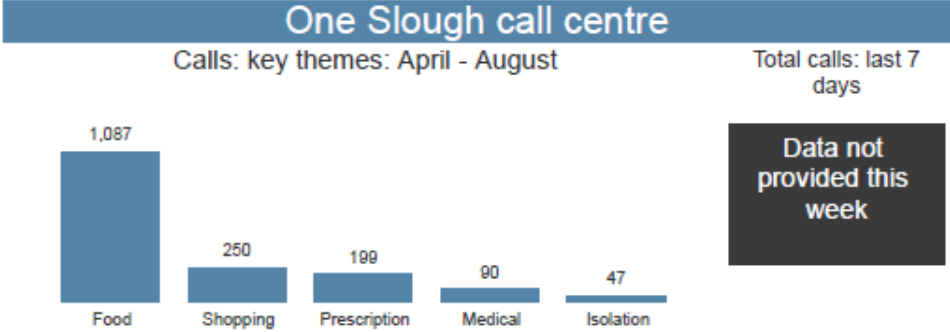
Confirmed cases of COVID-19 per 100,000 population (7 day rolling average)



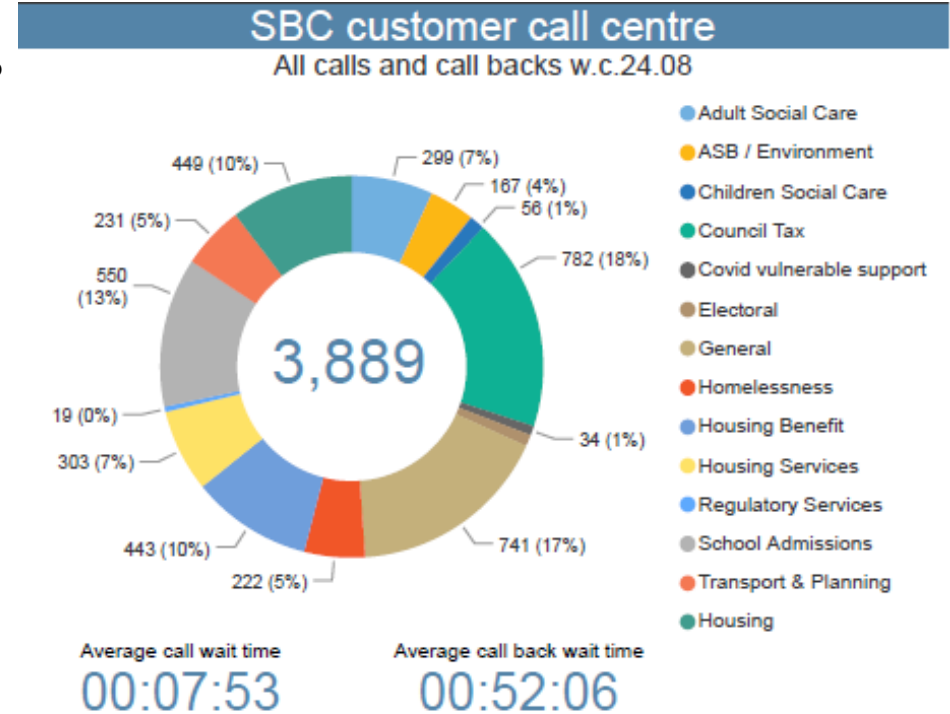
- Throughout the COVID-19 crisis, Slough has recorded 790 cases of COVID-19 in the borough.
- Over the last seven days, Slough has recorded 1.9 cases per day per 100,000 people. This rate is similar to the rate seen across the South East and the rest of England.
- Slough saw a spike of cases around the 10th August. Since then, the number of cases has remained relatively low, with a small increase in the last week.

Resident Contact Centres

Page 3

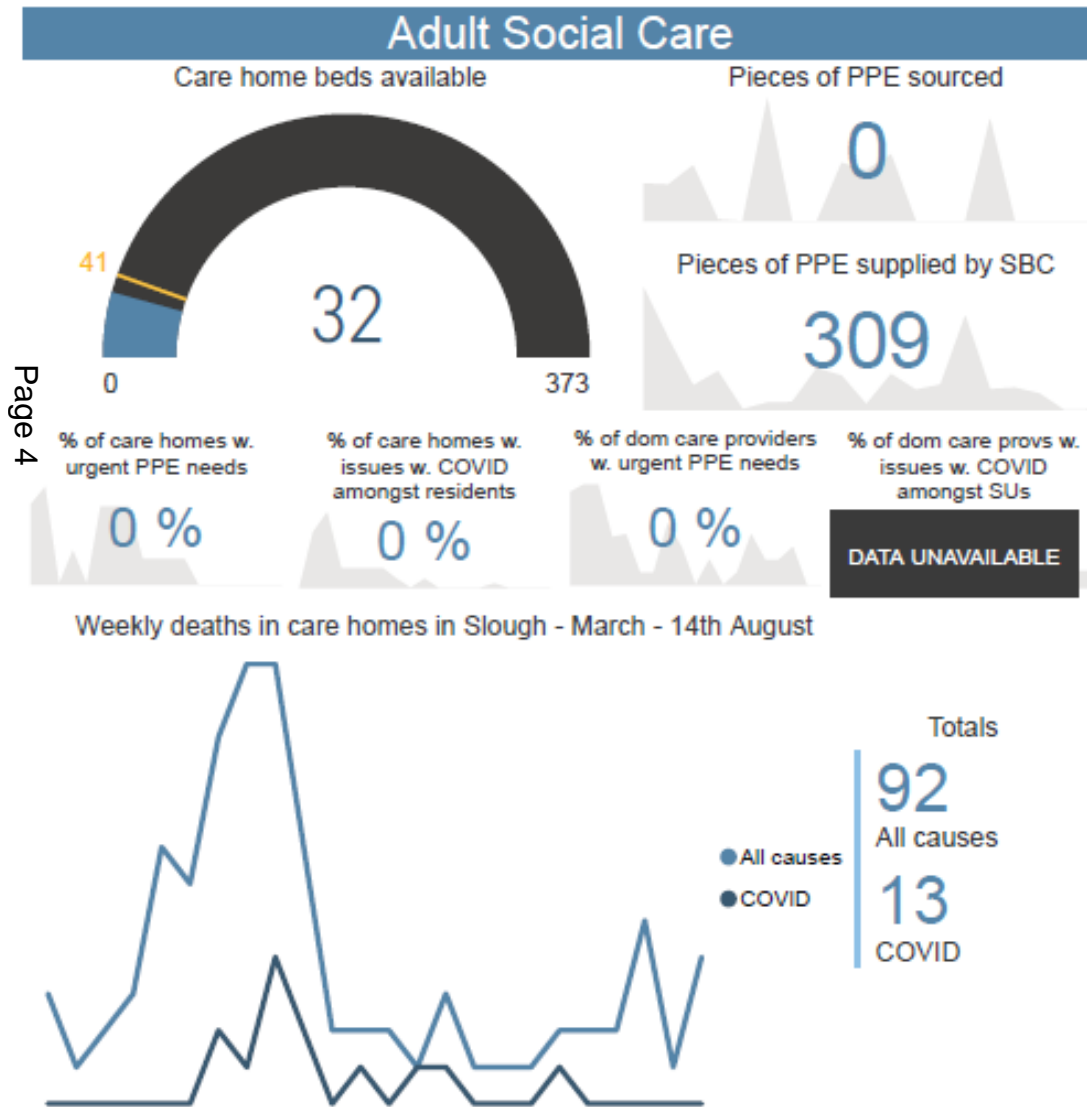


- The One Slough Call centre continues to take calls from residents in need of assistance. No data was provided this week – but 17 calls were taken the week before.



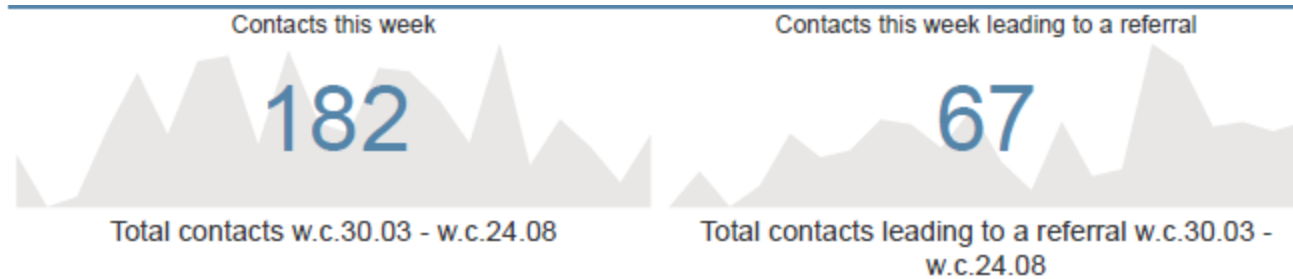
- The majority of these calls continue to relate to access to food.
- The SBC customer call centre is also providing support. It has taken nearly 4000 calls in the last week.
- The main topics these calls related to were council tax, school admissions and general enquiries.

Adult Social Care



- There are currently 32 care home beds available in Slough.
- No care homes or domiciliary care providers are currently reporting problems with supplies of PPE.
- No care homes are currently reporting issues with COVID-19 amongst the residents.
- During the pandemic, 13 care home residents have died of COVID-19.

Slough Children's Services Trust



% change on equivalent period 2019

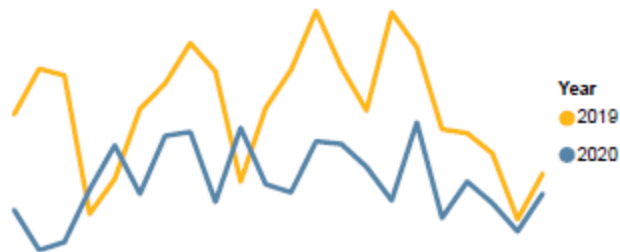
4,193

% change on equivalent period 2019

1,278

-22 %

Week by week trend



72 %

Week by week trend



- During lockdown, SCST has seen a lower rate of contacts than the year before.
- However, more of these contacts have led to a referral than the year before.
- 72% more referrals have been made in 2020 than 2019.

Bereavement Services



- Cruse Bereavement Care are a national charity who provide bereavement support in Slough. Their Thames Valley Berkshire centre covers Reading, Bracknell, Windsor & Maidenhead and Slough. They normally provide face-to-face and group sessions, as well as telephone support and advice. However, due to the current COVID-19 situation, all their support takes place over the telephone. The Thames Valley centre is supported by around 35 volunteers, and the charity is currently trying to raise extra funds to continue supporting the bereaved during the COVID-19 pandemic.

- Thames Hospice also provides bereavement services in East Berkshire. However, these services are only available to the families of those who have died from a long-term, life-limited condition such as dementia, Motor Neurone Disease or cancer. This support is accessed by GP referral.

Thames hospice

Questions

This page is intentionally left blank